



Mass HIway Overview: What's Happening In my Community? Southeast Region

Dec 22, 2015



Today's speakers



Len Levine

*Mass HIway Account Manager,
Practice Consultant with the Massachusetts eHealth Collaborative*



Murali Athuluri

*Mass HIway Account Management Lead
Senior Consultant with the Massachusetts eHealth Collaborative*



By the conclusion of today's webinar attendees will:

1. Understand what the Mass Hlway is and how it may help their organizations
2. Identify who else is on the Hlway in my region and how they may connect with them
3. Understand how to engage with the Mass Hlway to connect and exchange patient information with other healthcare organizations



What is the Mass Hlway?



The Mass Hlway is the statewide Health Information Exchange (HIE) providing secure, electronic transport of health-related information between health care organizations and providers regardless of affiliation or technology.

The Mass Hlway offers two services:

- 1. Direct Messaging** - Secure point-to-point transport of electronic patient health information among healthcare organizations and authorized government agencies for purposes of patient treatment, payment, or operations.
- 2. Query and Retrieve** – Relationship Listing Service (RLS) for locating healthcare organizations that hold records for a particular patient. Medical Record Request (MRR) service for initiating a query for a patient’s records.

The Mass Hlway is not a clinical data repository HIE and holds no clinical information.

The Mass Hlway is also not the state health insurance exchange known as the Health Connector.



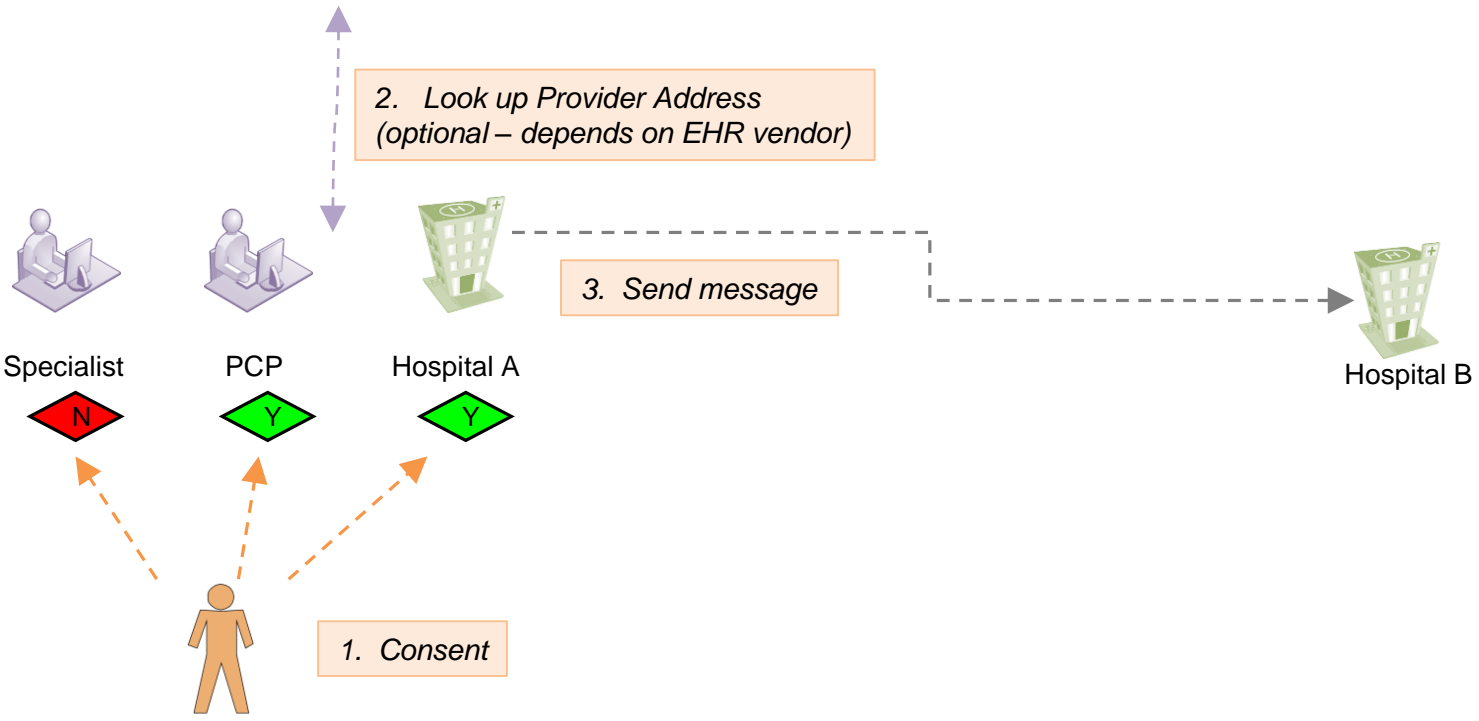
Direct Messaging Service



Data holder sends patient information to recipient

Provider Directory

<u>Provider name</u>	<u>Local name</u>	<u>Institution</u>	<u>Direct address</u>
Smith, Marilyn M	Smith, Marilyn	Hospital B	Marilyn.Smith@direct.HospitalB.masshighway.net
Smith, Marilyn M	Smith, Mary	Highland Primary Care	Marilyn.Smith@direct.HPC.masshighway.net





Why join the Mass Hlway?



Mass Hlway is foundational technology for helping healthcare organizations improve quality and safety, improve care coordination, and improve efficiency of medical records management

Providers are using the Mass Hlway to satisfy requirements of many programs:

- Demonstrate EHR proficiency - state physician licensing requirements
- Satisfy the 2017 requirement to connect to Mass Hlway
- Meaningful Use Stage 2 – Transition of Care and Public Health Reporting measures
- CMS Delivery System Transformation Initiatives (DSTI)
- Community Hospital Acceleration, Revitalization and Transformation Grants (CHART)
- Massachusetts Infrastructure and Capacity Building Grants
- Massachusetts Prevention and Wellness Trust Fund
- Patient Centered Medical Home (PCMH)



What can you send?



Mass HIway does not restrict message types. Message contents are encrypted end to end.

Patient clinical information:

- Summary of Care / Transition of Care Record (TOC)
- Request for Patient Care Summaries
- Discharge Summaries
- Referral Summary Information
- Specialist Consult Notes
- Progress Notes

Quality reporting:

- Information for calculation and reporting of clinical quality measures

Patient clinical alerts:

- Emergency Department Notification
- Mortality Notification
- Transfer Notification
- Disposition Notification (admit/discharge)

Public Health Reporting:

- Securely comply with reporting regulations for the department of public health



DPH Registries connected with Mass Hlway:

- Massachusetts Immunization Information System (MIIS)
- Electronic Lab Reporting (ELR)
- Syndromic Surveillance (SS)
- Massachusetts Cancer Registry (MCR)
- Opioid Treatment Program (OTP)
- Childhood Lead Poisoning Prevention Program (CLPPP)
- E-Referral
- Adult Lead
- PMP (Testing)



Who's using the Mass HIway?



There are currently 550+ participant organizations signed up for the HIway

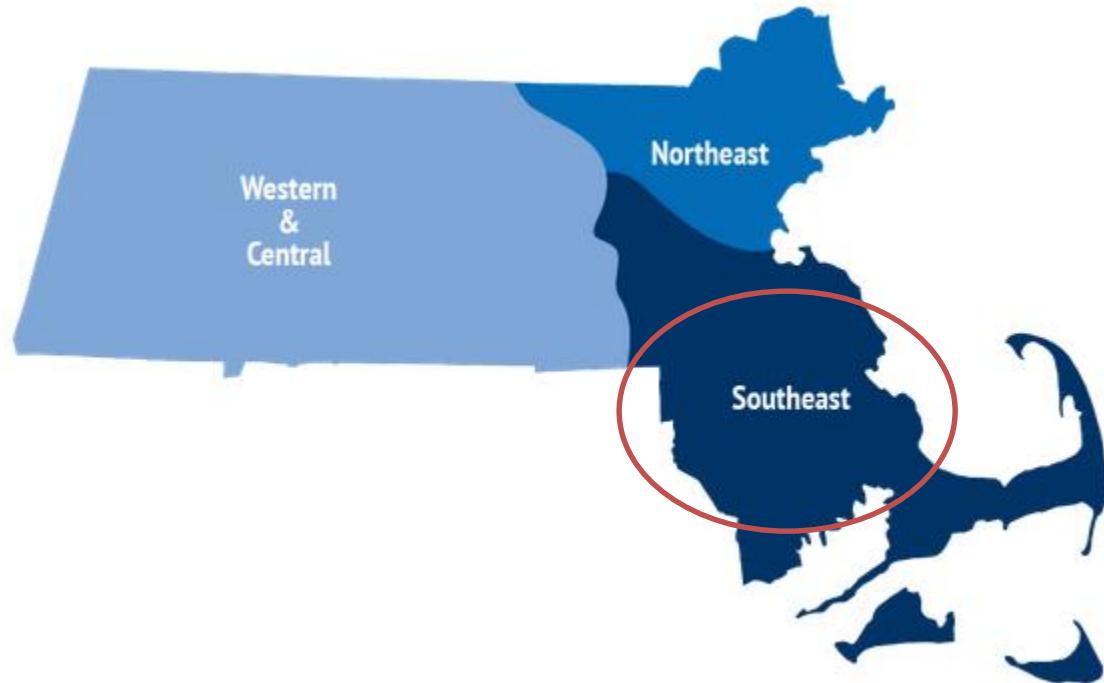
- The full participant list is available at <http://masshiway.net/HPP/Resources/ParticipantList/index.htm>

The Provider Directory contains over 7,000 addresses (department and individual level addresses included)

- The latest Provider Directory extracts are available at the Mass HIway website <http://masshiway.net/HPP/Services/ProviderDirectory/index.htm>. You will need to sign up to receive monthly notifications of PD extract updates



- **The Southeast region ranges from ranges from MetroWest to the southeast coastline through the Cape and Islands and includes the following communities:**
 - MetroWest
 - Norwood/Attleboro
 - South Shore
 - Metro South
 - Fall River
 - New Bedford
 - Cape and Islands





Hiway Participants by Level of Care

Southeast Region



Care Continuum

← 100+ Participants →

Acute	Ambulatory	Long-Term & Post-Acute
-------	------------	------------------------

More than 10 organizations

Mix of large networks and medical centers to single-site community hospitals

Approximately 80 organizations/providers

Primary care providers and specialists across a broad range of medical services

Health centers and clinics providing medical, emotional, behavioral, and additional social services

Urgent care and minute clinics

Approximately 15 organizations

Range of services and organization types including but not limited to:

Area Agency on Aging (AAA) Aging Service Access Point (ASAP), Skilled Nursing Facilities (SNF), nursing homes, Inpatient Rehabilitation Facilities (IRF), home health, palliative care, and hospice



Acute Care Hlway Participants



Southeast Region Acute*:

Beth Israel Deaconess Medical Center - Plymouth

Cape Cod Hospital

Falmouth Hospital

Martha's Vineyard Hospital

Milford Regional Medical Center

Morton Hospital

Nantucket Cottage Hospital

Signature Brockton Hospital

South Shore Hospital

Southcoast Health Systems

Sturdy Memorial

*Please recognize that this participant list is inclusive of multi-site networks and may not fully capture all of the connected organizations by sub-org name. Also this list is dynamic and changes frequently as new organizations move into production from testing.



Ambulatory Care Hlway Participants



Southeast Region Ambulatory*:

Adams Street Dermatology Associates P.C.

Goli, Ali MD, PC

Arthur Blegan

Blegen, Halward MD

Bridgewater Pediatrics

Brockton Neighborhood Healthcare

Brockton Pediatrics, Inc.

Childrens Medical Services

Coakley, Christopher MD

Community Counseling Of Bristol County

Community Health Center of Cape Cod

Cove Pediatrics

Crown Colony Pediatrics

Dermatology Professionals

Digestive Disease Associates

Abensohn & Raisner, MDs

Edward M. Kennedy Community Health Center

Family Medical Associates, P.C.

Framingham Pediatrics

Gleason and Greenfield Pediatrics

Gogstetter, Darin S MD

Greater New Bedford Community Health Center

Habit Opco Inc

Harbor Health Center - Hyannis

Harbor Health Center - Plymouth

Harbor Medical Associates

Healthfirst Family Care Center, Inc.

High Point Treatment Center

Holliston Pediatric Group-Holliston

Holliston Pediatric Group-Milford

Horizon Pediatrics Inc

JORDAN PHYSICIAN ASSOCIATES

*Please recognize that this participant list is inclusive of multi-site networks and may not fully capture all of the connected organizations by sub-org name. Also this list is dynamic and changes frequently as new organizations move into production from testing.



Southeast Region Ambulatory*:

Reed, Kenneth MD

Leisure, Katherine Murray

Briarpatch Pediatrics

Family Medicine Associates of SA

Medical Affiliates of Cape Cod

MetroWest Physicians

TRISTAN MEDICAL PC

Main Street Pediatrics

Mansfield Pediatrics Associates

Vonnegut, Mark MD

Mayflower Medical Associates

Medfield Internal Medicine

Medical Associates of Greater Boston

MV Pediatrics

Natick Pediatrics

Neponset Valley Pediatrics, PC

NEQCA - Hanna, Raafat I Attia MD, PC

Orleans Medical Center

Pediatric Associates Of New Bedford

Pediatric Associates of Northwood

Performance Pediatrics

Pleasant Hill Pediatrics

Plymouth Bay Internal Medicine

Plymouth Carver Primary Care

Pmg Physician Organization

Pulmonary And Primary Care

Rosenthal, Stephen MD

Sandwich Pediatrics

Seashore Point Wellness & Rehabilitation

Camargo, Sergio MD

Signature Medical Group

South Coast Dermatology

*Please recognize that this participant list is inclusive of multi-site networks and may not fully capture all of the connected organizations by sub-org name. Also this list is dynamic and changes frequently as new organizations move into production from testing.



Southeast Region Ambulatory*:

South Shore Nephrology

South Shore Skin Surgeons P.C.

South Suburban Pediatrics, Inc

Southcoast Physician Group

Stanley Street Treatment -SSTAR

Stern, Jeremy B MD

Sturdy Medical Group (Associates)

Swansea Pediatrics

Tri-County Medical Associates

Trinity Family Medicine, LLC

Village Pediatrics

Wareham Pediatric Associates

Wayland Pediatrics

Westwood Pediatrics

Whiting Medical Associates

*Please recognize that this participant list is inclusive of multi-site networks and may not fully capture all of the connected organizations by sub-org name. Also this list is dynamic and changes frequently as new organizations move into production from testing.



Long-Term & Post-Acute Care HIway Participants



Southeast Region LT&PAC*:

Bourne Manor

Duffy Health Center, Inc.

Brockton VNA

Cape Regency Rehabilitation and Health Care Center

Community Nurse & Hospice Care

JML - SNF

Maples Rehabilitation & Nursing Center LLC

Marian Manor, Inc.

Medway Country Manor

Norwell VNA

Sippican/Whittier Healthcare Center

South Shore VNA

Taunton Nursing Home (Pinnacle Health Management)

VNA of Cape Cod

Walpole Area VNA



*Please recognize that this participant list is inclusive of multi-site networks and may not fully capture all of the connected organizations by sub-org name. Also this list is dynamic and changes frequently as new organizations move into production from testing.



How can you connect?



User types

-  Physician practice
-  Hospital
-  Long-term care
Other providers
Public health
Health plans
-  Ancillary services

Connectivity options



EHR connects directly



EHR connects through
LAN Appliance

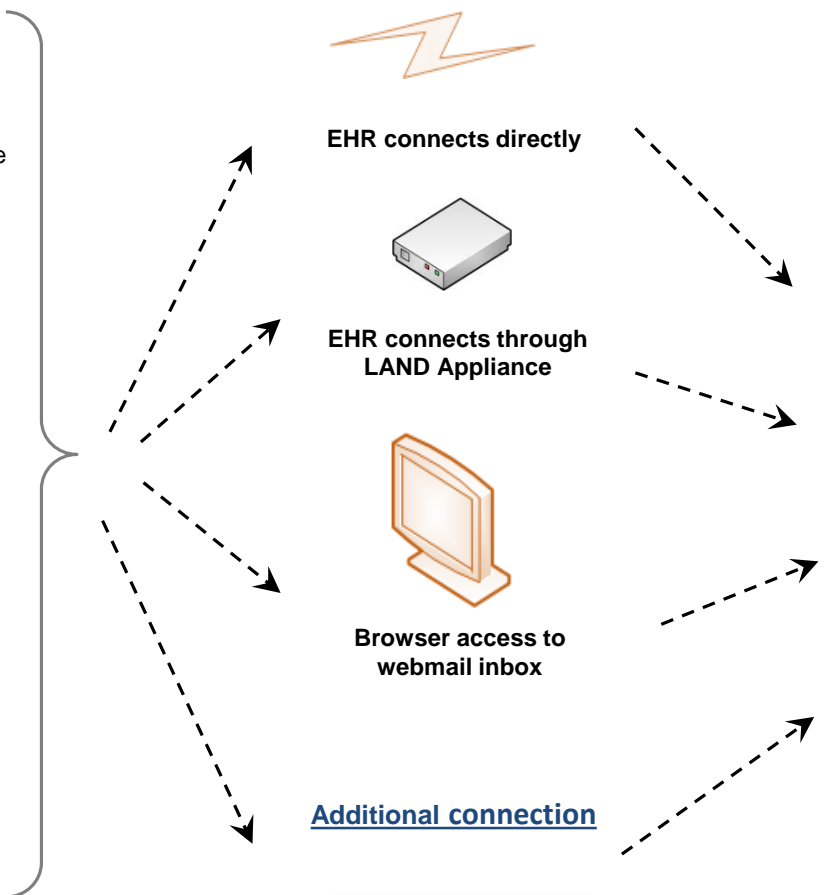


Browser access to
webmail inbox

Additional connection

Vendor HISP

HIE Services



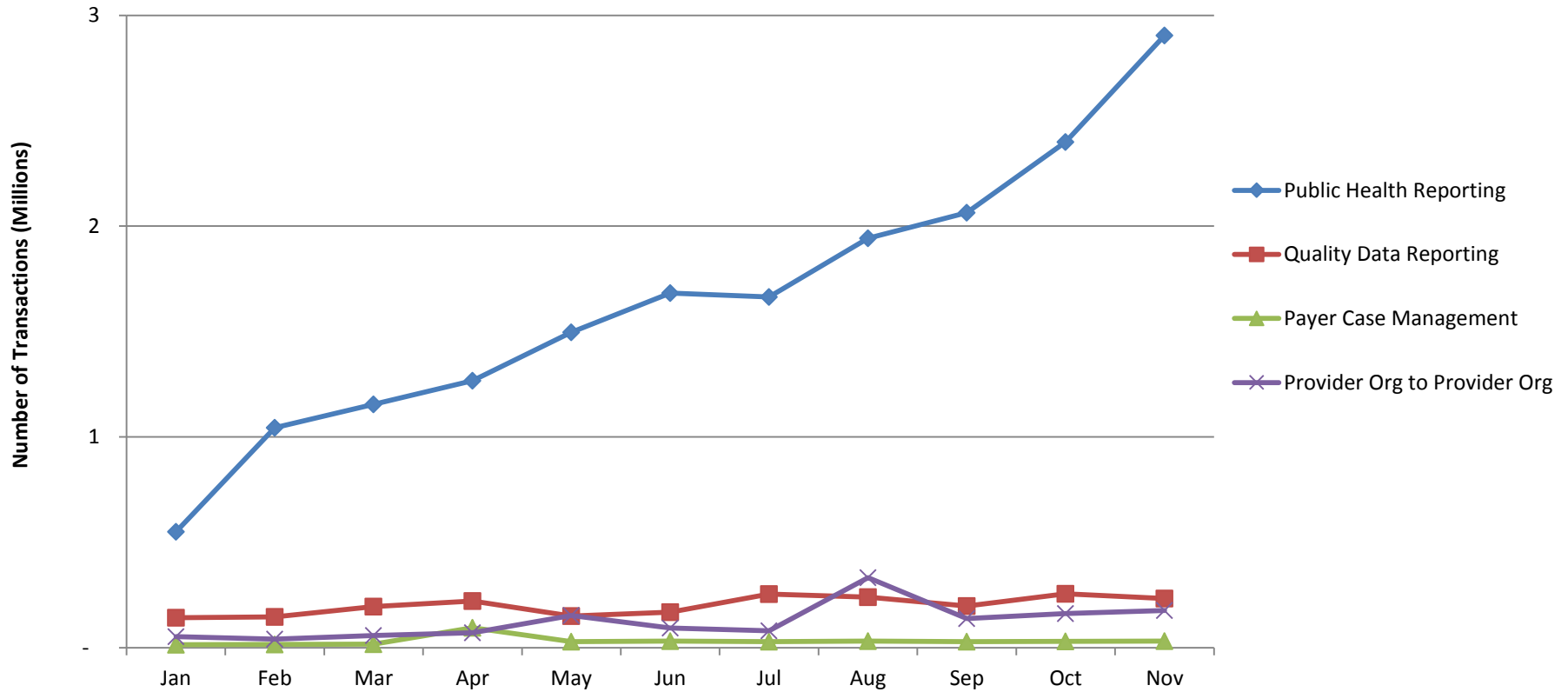


HISPs connected with Mass Hlway

- Allscripts (MedAllies)
- Aprima
- Athenahealth
- Care Accord (Pre-Testing)
- CareConnect (NetSmart HISP)
- Cerner
- DataMotion
- eClinicalWorks
- eClinicalWorks Plus (Testing)
- eLINC
- EMR Direct
- Inpriva
- MaxMD
- McKesson (RelayHealth)
- Medicity
- MyHealthProvider
- NextGen Share
- NHHIO
- SES
- Surescripts
- UpDox
- Wellport (By Lumira)



2015 HIway Production Transaction Trends by Use Case Type





Regional Transactions



Public Health Reporting



Health System

Immunization Reports



DPH / MIIS



Quality Data Reporting



Medical Group

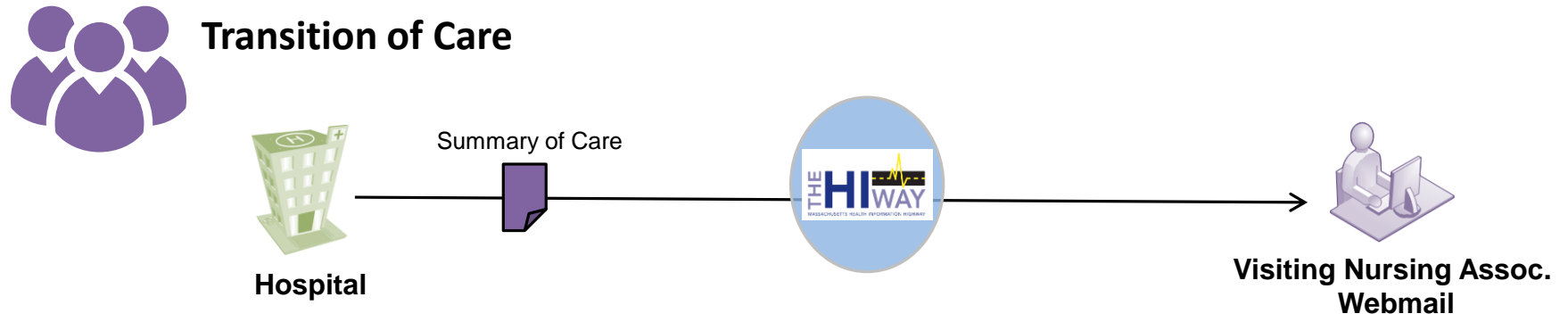
Summary of Care



Specialized Registry



Regional Transactions

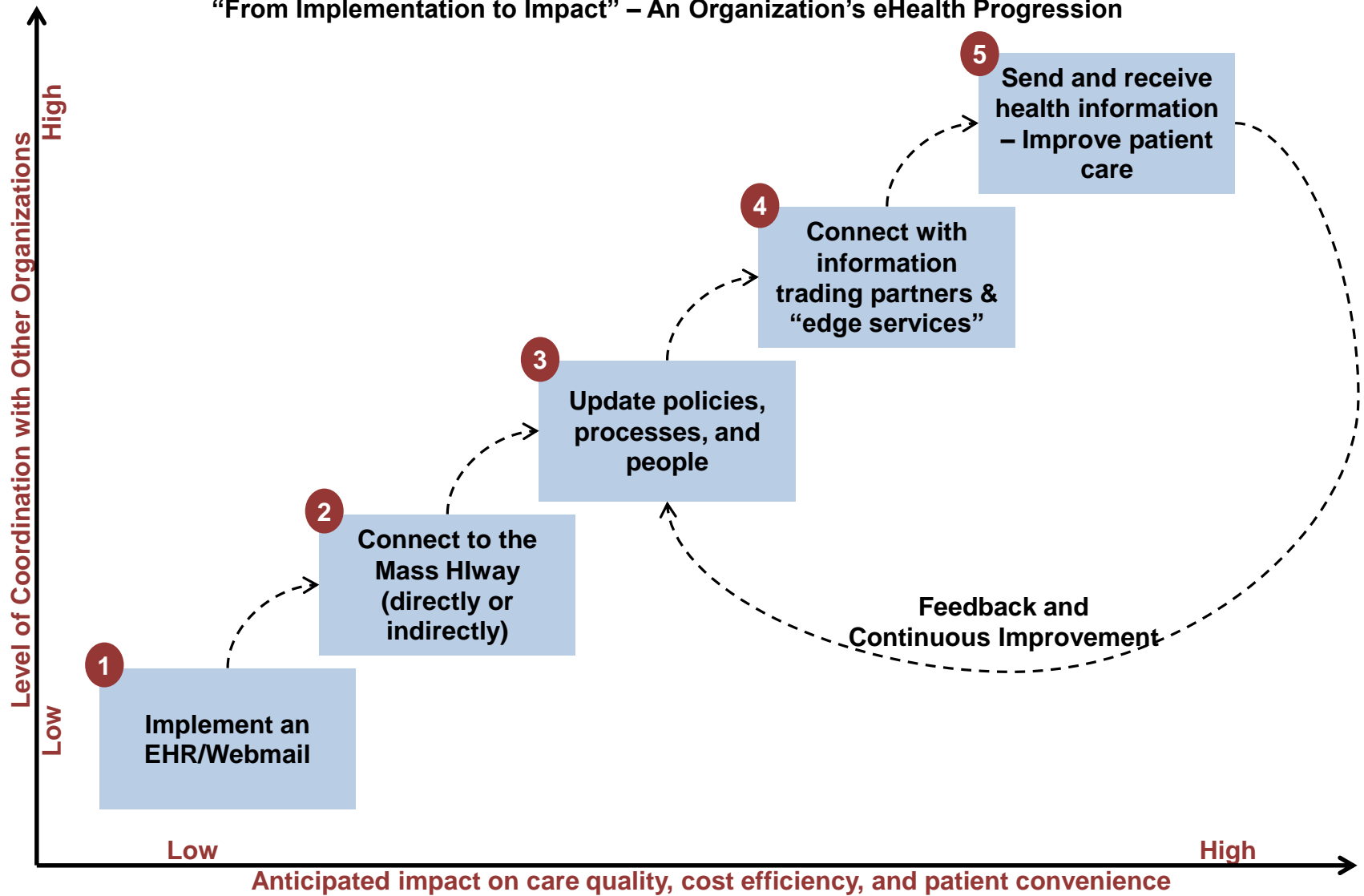




From Implementation to Impact



“From Implementation to Impact” – An Organization’s eHealth Progression





Guidance to Mass Hlway participants for implementing Mass Hlway consent:

- If you have a written consent to treat form that includes sharing information with other providers involved in your care, mention Mass Hlway is a mode of transport either on the Consent to Treat form or in your HIPAA notice of privacy policies (NPP). Make Hlway collateral available in registration areas.
- If you do not have a current written consent to treat form, use the simple one-line template (below) for those patients for whom you are going to send information to another provider over the Hlway.

I consent to allow my provider to use the Massachusetts Health Information Highway (Mass Hlway) to securely transmit my medical information to other authorized health care organizations involved in my care. (Signature and date)

Exceptions - No Mass Hlway consent is required for:

- Sending direct message from a non-Hlway HISP
- Transactions covered under separate statutory authority (e.g., Mandatory PH reporting)
- HIPAA defined administrative transactions that directly support payment (e.g., Eligibility checking)
- Transactions sent over the Mass Hlway between a Covered Entity and its Business Associate(s) for healthcare operations



Call to action



New to the HIway?

- Contact the Mass HIway Account Management Team to discuss your needs, to enroll, and to get connected
- Contact Murali Athuluri at mathuluri@maehc.org or 781-296-3857

Already a Participant on the HIway?

- Join the Southeast Region focus group
- Engage your clinical and business leadership to participate as well
- Prepare by specifically identifying what is working well and what needs improvement with health information you are sending and receiving
- We'll facilitate ongoing inter-organizational continuous improvement discussions
- Contact Jessica Hatch at jhatch@maehc.org or 339-222-6126 and express your interest in being apart of this innovative Southeast Region focus group



General Contact Information



The Massachusetts Health Information Highway
1.855.MAHIWAY (1.855.624.4929) Option 1
General Support: masshiway@state.ma.us
Production Support: masshiwaysupport@state.ma.us
www.masshiway.net

